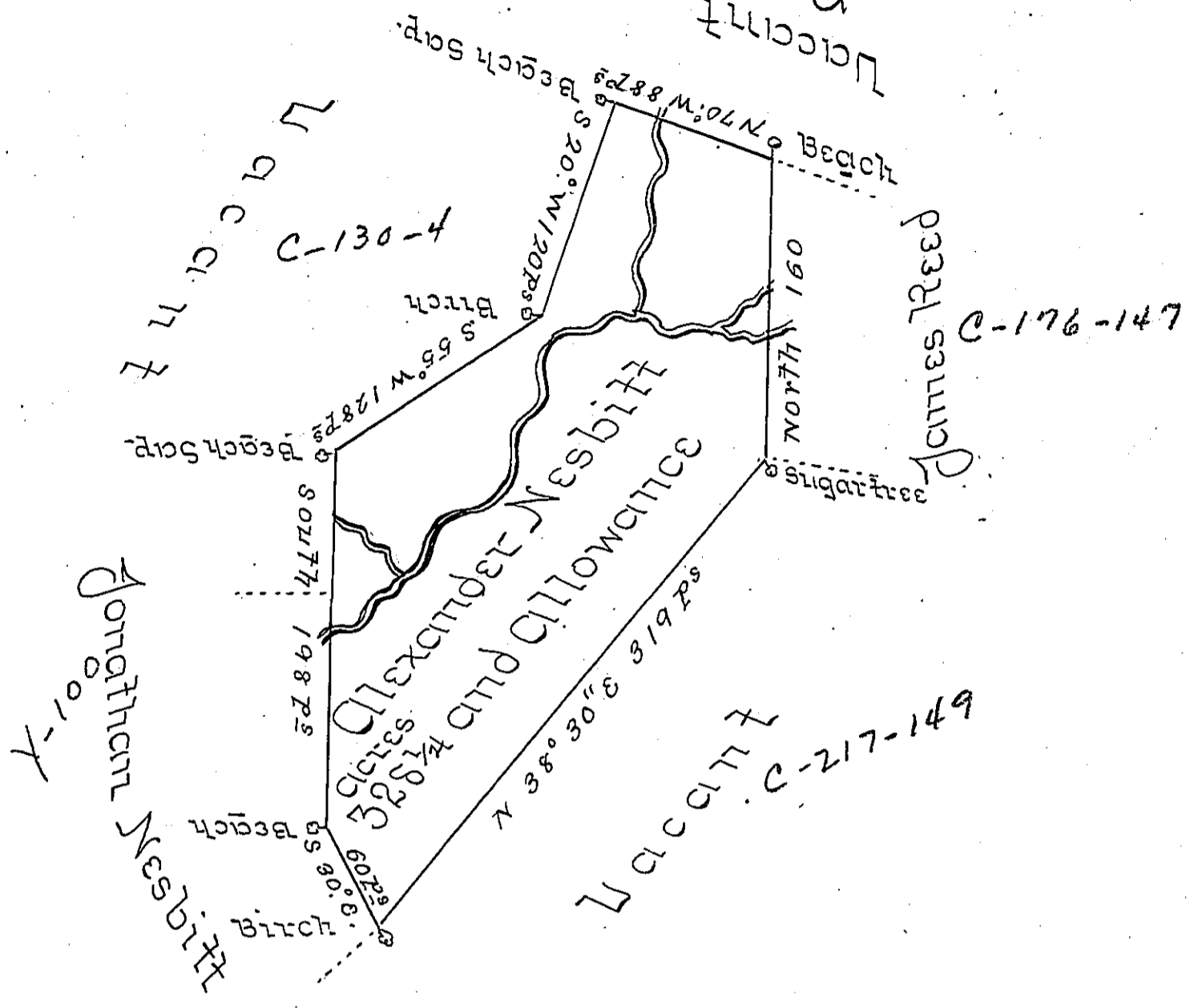


G-22



A Draught of a Tract of land called \_\_\_\_\_ Situate  
 on the Waters of Wyalosing Creek in the County of  
 Northumberland containing three hundred and  
 twenty eight Acres and one quarter of an Acre  
 besides the usual allowance of six Percent for  
 Roads &c Surveyed the Ninth day of Septem-  
 ber 1776 for Alexander Nesbitt in pursuance  
 of a Warrant dated the 17<sup>th</sup> day of March 1774.

by Chas Stewart Dep<sup>y</sup> Surv<sup>r</sup>

do  
 John Lukens Esq<sup>r</sup> Surv<sup>r</sup> Gen<sup>l</sup>

IN TESTIMONY that the above is a copy of the original remaining on file in  
 the Department of Internal Affairs of Pennsylvania, made  
 conformably to an Act of Assembly approved the 16th day of  
 February, 1833, I have hereunto set my Hand and caused  
 the Seal of said Department to be affixed at Harrisburg,  
 this twelfth day of March 1906.

*Leach R Brown*  
 Secretary of Internal Affairs.